

# Community Access: Partner with Patients

Streamline fulfillment of multiple translational biospecimen studies in specified patient populations to cut costs and accelerate results.



## Procure Patient Biospecimens through Sanguine Community Access to Achieve:

### Efficiency gains

Administrative requirements are handled upfront.

Encourages communication among multiple stakeholders and pipelines.

### Time & cost savings

Cut turnaround time to ~3-4 weeks from request to delivery.

Allocate more resources to study implementation.

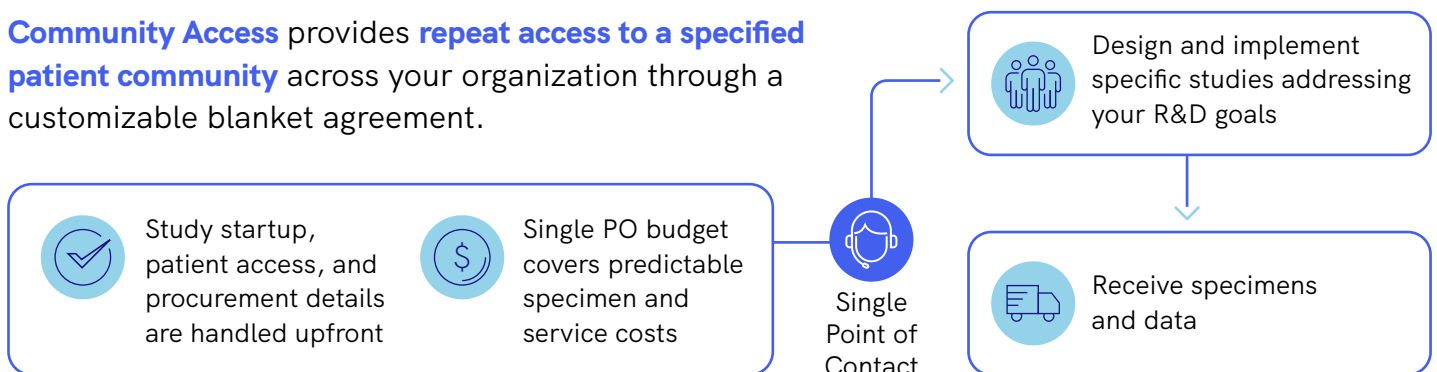
### Vertical integration

Rely on one partner from patient recruitment to sample receipt, including specimen & data collection, processing, and delivery.

Patient-centric, prospective biospecimen collection empowers you to design high-quality and relevant biomarker investigations. Sanguine facilitates patient participation in your therapy R&D programs, leveraging our nationwide network of 70,000+ research-ready individuals covering 100+ disease conditions. You specify the donor criteria, and we prospectively collect and deliver specimens and data.

Does your organization annually engage in multiple translational studies within one or several specific disease states? **Community Access** may be right for you.

**Community Access** provides **repeat access to a specified patient community** across your organization through a customizable blanket agreement.



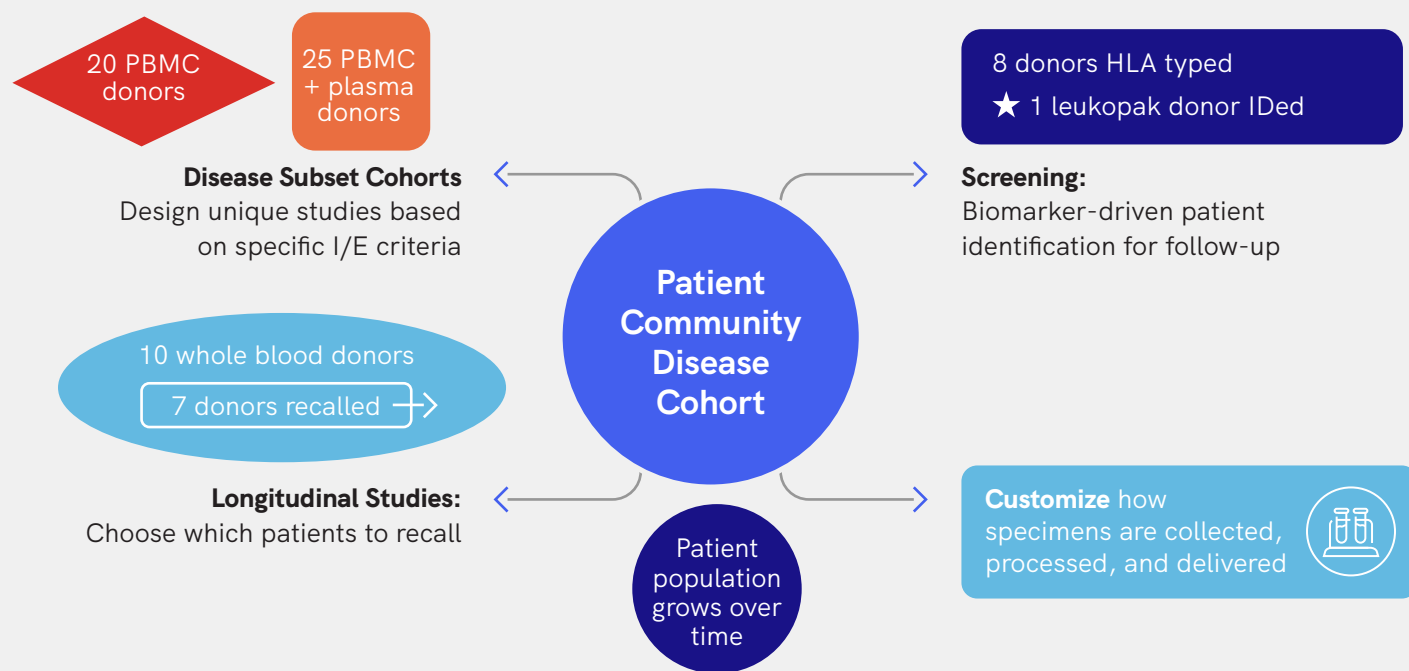
© Sanguine 2023 | Rev: COAC-OPR-23-01

## Accelerate your Research with Comprehensive Donor Data from Recallable Patients

Sanguine combines the convenience of in-home donation with digital tools for active patient recruitment and engagement, giving you access to research-ready individuals who are motivated to participate.

- All specimens include available donor data (e.g., medical records & demographics).
- Complete the patient story with surveys and questionnaires (e.g., PROs).
- Support longitudinal and screening studies with repeat collections from recallable donors.
- Reduce variability with our in-house specimen processing and analysis services.
- Your community access grows as our patient network grows.

## Examples of Flexible and Dynamic Study Designs



## Case Study: Large Pharma with Access to Two Autoimmune Communities

A global pharmaceutical company partnered with Sanguine to initiate nine separate studies (range n=1 to n=20, mean n=10) among two distinct patient communities over one year.

Cut turnaround times by  
**6 weeks** per study

**50%** Cost savings over 9 studies

**70%** Cost savings on a single donation study

© Sanguine 2023 | Rev: COAC-OPR-23-01